



# STAR HEADLIGHT & LANTERN CO.

**DLXT THINLINE PERIMETER LED LIGHTS**



DLXT-121



DLXT-121C



DLXT-124



DLXT2-CUST



DLXT3-CUST



## Specifications and Features

- Only 1/2" thick
- High intensity LEDs are built with fully encapsulated circuitry
- S-Link System™ synchronizing capability with other Star LED units (DLXT only)
- Weather resistant bezels available in Black (standard), Chrome, and White
- Interior or exterior mounting
- Surface mount or use optional mounting brackets (optional brackets only available for single bezel series)
- Reverse polarity protected
- Current limit protection over entire operating voltage
- Dimensions:
  - single bezel** - 2 1/4"H x 5 3/4"W x 1/2"D
  - double bezel** - 4"H x 5 3/4"W x 1/2"D
  - triple bezel** - 6"H x 5 3/4"W x 1/2"D
- Voltage: 10-16V DC or 24V DC
- Amp draw: 0.3 amps @ 12V DC, 0.2 amps @ 24V DC
- Color combinations: DLXT, DLHT
 

- Approvals: SAE J595 Class II (Amber, Red, Blue), \*approvals only apply when properly configured

## Model Numbers/Descriptions:

DLXT Series	Auxiliary standard warning LED light, 10 plus customer selectable flash patterns, including steady-on
DLHT Series	Auxiliary hazard/turn LED light, flasher in warning pattern overridden by turn signal output, flashes with turn signal input, 10 customer selectable flash patterns
DLTT Series	Auxiliary stop/tail/turn LED light
DLDT-124-AB	Dual-function, Dual-Color (Amber/Blue only), independent activation control over each color
DLXT-2CUST	Auxiliary standard warning LED light, 10 plus customer selectable flash patterns, including steady-on, double bezel
DLXT-3CUST	Auxiliary standard warning LED light, 10 plus customer selectable flash patterns, including steady-on, triple bezel

SF058 Rev H 3-1-2016



Star Headlight & Lantern Co., Inc.  
 455 Rochester Street  
 Avon, NY 14414  
 Phone: 585-226-9500  
 Fax: 888-478-2797  
[starheadlight.com](http://starheadlight.com)



PROUDLY MADE IN THE U.S.A.  
 An ISO 9001:2008 Certified Company



# STAR HEADLIGHT & LANTERN CO.

## DLNT AUXILIARY LIGHTS



DLNT-121






DLXT-121S



DLNT-122SCRW

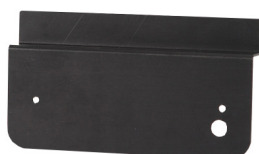
### Specifications and Features

- High intensity LEDs
- Black (standard), or Chrome finish available in all three bezel options
- Fully encapsulated circuitry
- Surface mount
- Reverse polarity protected and current limit protection over entire operating voltage
- Dimensions:
  - single bezel** - 2 1/4"H x 6 7/8"W x 1/2"D
  - double bezel** - 4"H x 6 7/8"W x 1/2"D
- Voltage: 10-16V DC or 24V DC
- Amp draw: 0.3 amps @ 12V DC, 0.2 amps @ 24V DC
- Color combinations: DLNT - 
  - DLNT-S single bezel  , DLNT-S double bezel 

### Model Numbers/Descriptions:

DLNT Series	16 LED, steady burn value head, for use as an auxiliary area light, compartment light, or dummy head
DLNT-S Series	16 LED, steady burn value head, area of compartment lighting with on/off switch, for interior mounting only

## SINGLE BEZEL SERIES BRACKETS



274-DLXT-W  
Window mounting



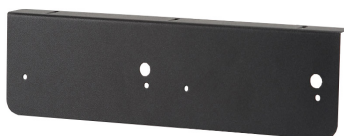
274-DLXT-45  
45° angle mounting



274-DLXT-U  
L-bracket for universal mounting



274-DLXT-T  
Trunk mounting



274-DLXT-1X2  
L-bracket for mounting two single bezel series LED lights horizontally



274-DLXT-2X1  
L-bracket for mounting two single bezel series LED lights vertically



274-DLXT-RL  
License plate mounting



BB274-DLXTHU-LPB  
License plate bracket holds two DLXTHU or DLXT units



BB274-DLXT-LPB  
License plate bracket holds six DLXT models, three on each side



Star Headlight & Lantern Co., Inc.  
455 Rochester Street  
Avon, NY 14414  
Phone: 585-226-9500  
Fax: 888-478-2797  
starheadlight.com 



 PROUDLY MADE IN THE U.S.A.  
An ISO 9001:2008 Certified Company