

## Feniex Hammer S-3017



**Feniex Product Copyrights** This price List and the mentioned Feniex products include or describe copyrighted Feniex material. Laws in the United States and other countries preserve for Feniex Industries and its licensors certain exclusive rights for copyrighted material, including the exclusive right to copy, reproduce in any form, distribute and make derivative works of the copyrighted material. Accordingly, any copyrighted material of Feniex and its licensors contained herein or in the Feniex products described in this Price List may not be copied, reproduced, distributed, merged or modified, transmitted, transcribed, stored in retrieval system or translated into any language or computer language, in any form or by any means, without prior written permission of Feniex Industries, Inc. Feniex and the stylized Feniex logo are registered in the U.S. Patent & Trademark Office.



## Table of Contents

<b>Safety Regulations &amp; Warranty</b> .....	3
Service after Expiration .....	3
Copyright .....	3
Feniex Product Copyright .....	3
<b>System Specification</b> .....	4
Siren Tones .....	4
Changing Siren Tones .....	4
<b>Equipment Dimensions</b> .....	5
<b>Box Contents</b> .....	6
<b>Wiring Diagram</b> .....	7
Wiring Instructions .....	7
<b>Mounting Instructions</b> .....	8



# Safety Regulations & Warranty

## Safety Regulations

The following provides all the information necessary to safely operate the previously listed products of Feniex Industries, Inc. Please read this manual thoroughly before installing or operating your new product in order to prevent any damage or injury. Failure to follow the listed instructions in this manual may result in damage to your products or personal injury.

- Proper installation of this product requires good knowledge of automotive systems, electronics and procedures.
- Please guarantee all vital components of the vehicle are not in danger of being damaged by drilling holes necessary for installation. Check all sides of the mounting surface before drilling any holes into the vehicle.
- Do not install this product in any way that interferes with the deployment of the air bag. Doing so may damage the effectiveness of the air bag and can lead to serious personal and vehicle injury. The installer will assume full responsibility of proper installation of the new unit.
- Please clean the mounting surface before installation of the unit when using tape, brackets, magnet, Velcro or suction cups.
- The product's ground wire must be connected directly to the Negative (-) battery post for effective use of the unit. Please follow all wiring guidelines provided to guarantee long lifespan and productivity. Failing to follow these instructions may result in damage to the product.

## Warranty

Feniex Industries, Inc. warrants to the original purchaser that the product shall be free from defects in material and workmanship for 5 years from the date of purchase for all LED products. Feniex Industries warranties speakers, sirens, flashers, and controllers for 2 years.

If a warranty problem occurs, please contact customer support at 1.800.615.8350 or visit the web site at [www.Feniex.com](http://www.Feniex.com). If the product needs to be returned for repair or replacement, call our customer support line to receive a return merchandise authorization number.

Operational times are from 10 a.m. to 5 p.m. central time, Monday through Friday. Please do not send in product without contacting support first for a RMA number.

## Service After Expiration

Feniex Industries will still provide service for all products after expiration of the warranty. For any issues, call the customer support line. In some instances it may be necessary for the product to be shipped, freight prepaid and insured for loss or damage to Feniex headquarters.

**Warning!** Utilizing non-factory screws and mounting brackets may result in loss of warranty coverage.

## Copyright

This instruction manual and the Feniex products described in this instruction manual may include or describe copyrighted Feniex material. Laws in the United States and other countries preserve for Feniex Industries and its licensors certain exclusive rights for copyrighted material, including the exclusive right to copy, reproduce in any form, distribute and make derivative works of the copyrighted material. Accordingly, any copyrighted material of Feniex and its licensors contained herein or in the Feniex products described in this instruction manual may not be copied, reproduced, distributed, merged or modified in any manner without the express written permission of Feniex Industries, Inc.

## Feniex Product Copyrights

The products described in this document are the property of Feniex Industries, Inc. It is furnished by express license agreement only and may be used only in accordance with the terms of such an agreement. Products and documentation are copyrighted materials. Making unauthorized copies is prohibited by law. No part of the product or documentation may be reproduced, transmitted, transcribed, stored in retrieval system or translated into any language or computer language, in any form or by any means, without prior permission from Feniex Industries, Inc.



## System Specification

### System Specifications

Output	100W
IP Rating	IP67
Frequency Response	182-1000Hz
Decibals	115dB
Fuse	Onboard fuse
Weight	7.5lbs
Current Draw	8.5 amps
Tones	7 siren tones

## Siren Tones

### Siren Tones

Phaser	Mode 1 default
Slow Yelp	Mode 2 default
PCall Slow	
Wail	
Mechanical	
Hi-Lo	
Hammer	

## Changing Siren Tones

To change siren tones for modes 1, 2 and 3, follow the instructions below:

1.) Connect the Siren to the battery, attaching the red 12V+ wire to the positive terminal of the vehicle's battery. Ground the black wire or connect it to the 12V- terminal of the vehicle's battery.

2.) Connect the mode wire you would like to program to the positive terminal of the vehicle's battery.

3.) Momentarily tap the Tone Changer wire (blue) to the positive terminal to change tones.

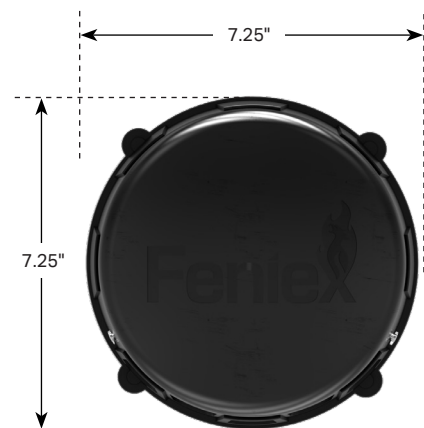
**Warning!** The Hammer low frequency siren is loud and can be dangerous to hearing. Wear protective wear like ear plugs when listening to the device.



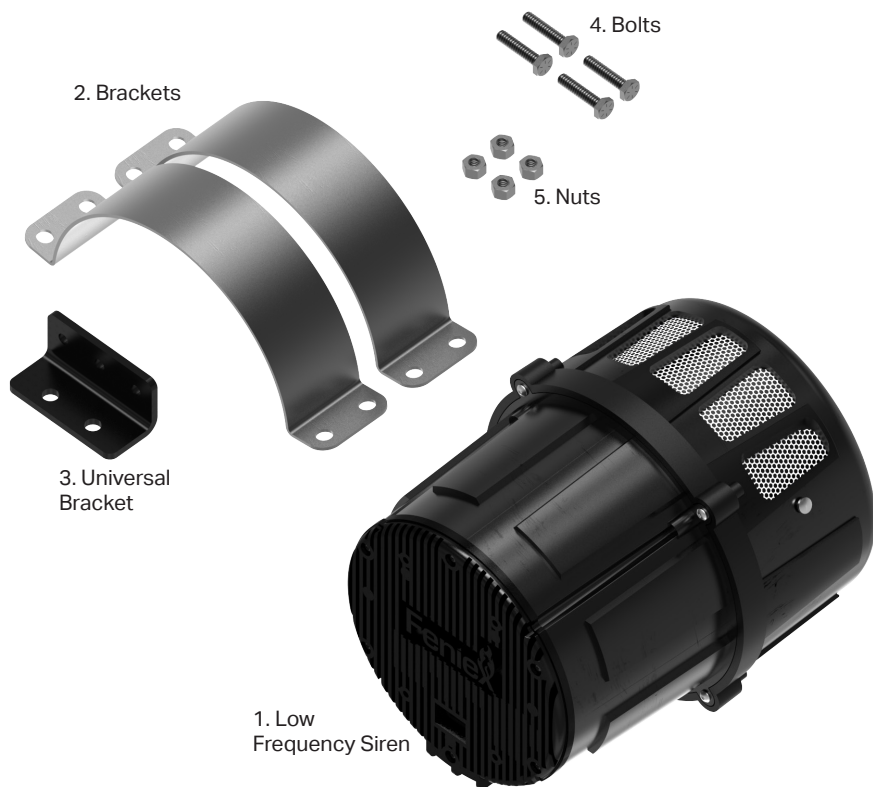
## Equipment Dimensions

### Specifications

Dimensions: 7.25" W x 7.25" L x 9.25" H



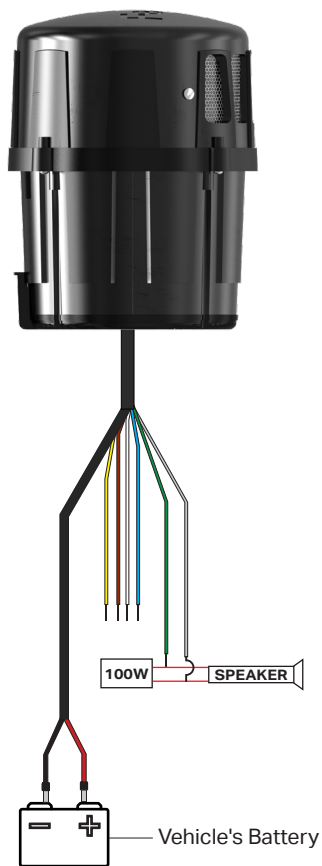
## Box Contents



Box Contents	Quantity
1. Low Frequency Siren	1
2. Brackets	2
3. Universal Bracket	1
4. Bolts	4
5. Nuts	4

Vehicle Specific Brackets	Models
Ford Explorer	2016+
Ford Taurus	2013+
Chevy Tahoe	2015+
Chevy Suburban	2015+
Dodge Charger	2015+

## Wiring Diagram



Color:	Function:	Connection
■ Black	Ground	Connects to the negative terminal of the vehicle's battery.
■ Red	Battery (+12VDC)	Connects to the positive terminal of the vehicle's battery.
■ Yellow	Mode 1	Switch/controller
■ Brown	Mode 2	Switch/controller
■ White	Park Kill	Switch/controller
■ Green	Audio In	Siren
■ Gray	Audio Out	Siren
■ Blue	Tone Changer	Switch/controller (optional)

*\*See page 4 for fuse specifications*

## Wiring Instructions

1.) Connect the siren to the battery, attaching the red 12V+ wire to the positive terminal of the vehicle's battery. Ground the black wire or connect it to the 12V-terminal of the vehicle's battery.

2.) If connecting to an external siren, connect the green wire (audio in)

to the corresponding "audio in" port on the siren.

3.) Connect the gray wire (audio out) to the corresponding "audio out" port on the siren.

4.) Connect the mode wires (yellow and brown) to a switch panel or controller relay (see page 4 to change siren tones).

## Mounting Instructions

1.) Place the L-bracket on the intended mounting surface. Mark the hole placement of the 2 hole brackets.



**Caution!** Attach the light bar to a secure area of the vehicle that can support the weight. Do not drill into any parts that may have wiring or might tamper with the functionality of the vehicle.

2.) Use the provided C-brackets to attach the L-bracket to the side of the Hammer. Use the provided bolts and nuts to secure the brackets around the Hammer.

3.) Once secured, place the Hammer on the intended mounting surface.

4.) Drill the 3 holes marked in step 1 for the bracket.

5.) Secure the Hammer and brackets to the mounting surface.

6.) Route the wires away from any sharp edges and follow the wiring diagram on page 9.

